



- > data
- > voice
- > video

FastCopper+ is designed to connect LANs and workstations in a commercial campus environment.

XL-4000™ *FastCopper+™ Bridge / Router*



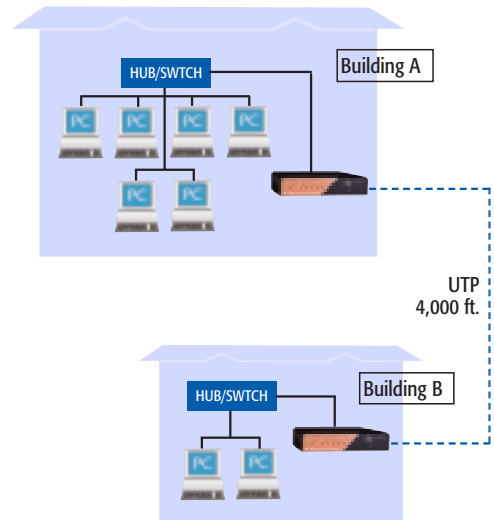
The XL-4000™ / High-Speed Commercial Networking
XL-4000 FastCopper+ Bridge/Router is the latest in Tut Systems' line of Commercial Campus solutions. Utilizing Tut's proprietary FastCopper+ line technology, derived from VDSL, XL-4000 extends your network up to 4000 ft. at 10 Mbps over a single copper pair.

FastCopper+ is designed to connect LANs and workstations in a commercial campus environment. Most customers will utilize XL-4000 as a transparent bridge, which automatically filters local packets to reduce local traffic. XL-4000 may also be configured as a static IP router, for more intelligent packet transfer. Managing XL-4000 units remotely is easily accomplished with SNMP and Telnet protocols.

XL-4000 is ideal for connecting buildings within various campus settings, such as universities, hospitals, airports, industrial sites, hotels and resorts. In these expansive campus environments, XL-4000 FastCopper+ Bridge/Router can solve your complex networking challenges quickly and affordably.

Features

- Manage remotely via SNMP or Telnet
- Configurable as Bridge or IP Router
- Extends LANs an additional 4000 ft.
- 10 Mbps, full-duplex bandwidth



Features & Benefits

High-speed solution for campus LANs

- Speeds of 10 Mbps, full-duplex (20 Mbps available bandwidth)
- Provides high-speed data access over standard 24 AWG
- Utilizes *FastCopper+* technology, derived from VDSL
- Ideal for connection to 10/100 Ethernet switch
- Auto-sensing 10-BaseT interface for connection to PC or LAN

QAM Line-coding

- Preserves the integrity and reduces cross-talk of other data services when deployed concurrently
- Industry standard line-coding

Superior Management Capabilities

- SNMP and Telnet protocols for remote management
- Console port for local management
- Manage IP and non-IP traffic discretely

Bridging and Routing Performance

- Transparent bridging – filters local packets
- Automatically set to operate as bridge – no configuration necessary
- Configurable as static IP router for maximum use of available bandwidth

Remote Software Upgrade Capability

- Reduce deployment costs by eliminating the need for on-site field upgrades

DHCP Relay Agent

- Facilitates dynamic IP address assignment

Product Specifications

Performance

Data Rate: 10 Mbps, full-duplex
 Distance: 4000 ft

Interfaces

Line Interface: RJ-11
 LAN Interface: RJ-45 – Auto-crossover to connect to hub or PC; Full-duplex capable
 Console Port: DB-9, RS-232

Management

Interface / Protocols: Console Port; Telnet; SNMP v1
 Security: Password configurable

Bridging/Routing

Bridging: Transparent Bridging (IEEE 802.1d)
 Spanning Tree Protocol (STP)
 IP Routing: Static routing table (up to 6 entries)

Operating Environment

Temperature: Operating: 0°C to 50°C; Storage: -40°C to +70°C
 Relative Humidity: 5% to 90% (non-condensing)

Power Characteristics

Power Consumption: 5 Watts
 Surge Protection: Yes (in-line)
 Power Supply (Voltage): Domestic: 120VAC, 60Hz
 International: 100-230 VAC, 50/60 Hz

Regulatory Certifications

North America: FCC Part 15, Class A; UL1950; CSA950
 Europe: CE

About Tut Systems, Inc.

Tut Systems (NASDAQ: TUTS) is the leading provider of solutions that deliver reliable broadband services within multi-tenant buildings (MTUs) such as hotels, apartments, student housing and multi-tenant commercial properties. In partnership with service providers and real estate investment trusts, Tut's solutions have been deployed in hotel, commercial and residential properties worldwide.

More information on Tut and its products, including international availability, can be found at <http://www.tutsystems.com>, or by contacting Tut's US headquarters in Pleasanton, California, at +1-925-460-3900 or 800-998-4888. Investor queries should be directed to 800-486-1241.

Tut Systems and the Tut logo is a registered trademark of Tut Systems, Inc. IntelliPOP and Signature Switch are trademarks of Tut Systems, Inc. All other company and product names may be trademarks of their respective holders.

© 2001, TUT SYSTEMS, INC. ALL RIGHTS RESERVED.

MC-JOB 382_052401_REV1A



Tut Systems, Inc.
 5964 West Las Positas Boulevard | Pleasanton, CA 94588
www.tutsystems.com
 Sales 800.998.4888 | Phone 925.460.3900 | Fax 925.460.3901