



ORiNOCO™ AS-1000 Access Server

Highly Secure Wireless Broadband for Public Access

ORiNOCO AS-1000 is a high-end wireless access server. It is designed to provide the performance, bandwidth, quality, control, and security that enterprises and service providers have come to expect from their IP networks. ORiNOCO AS-1000 is an infrastructure solution within the ORiNOCO suite that also includes the ORiNOCO PC cards for client use. The AS-1000 is software and firmware upgradeable via TFTP.

High-end Wireless Networks

ORiNOCO AS-1000 is particularly suitable for large enterprises, service providers, and Internet access in public areas such as airports, hotels, and convention centers. One AS-1000 provides per-user/per-session encryption for up to 50 simultane-

ous users, and RADIUS user authentication. A fully SNMP-managed system, AS-1000 integrates easily into existing management systems. It is also designed for maximum security in managing the network, user profiles, and enforcing connection policies.

Security, Confidentiality and Control

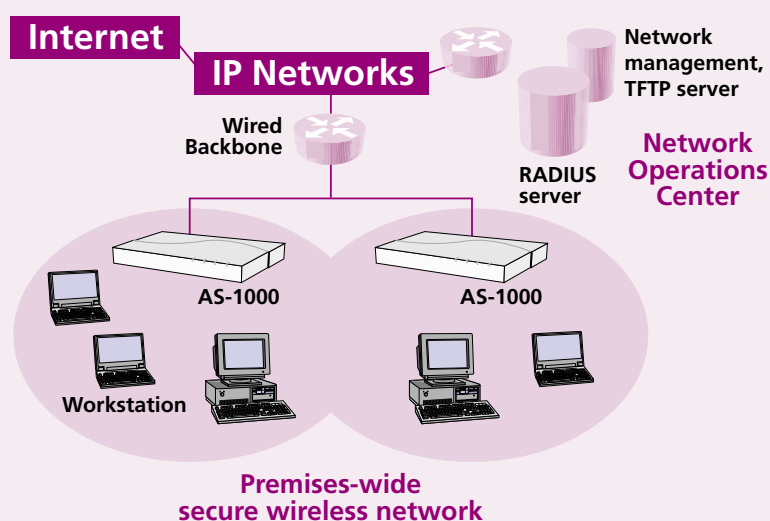
With the per-user/ per-session keys ORiNOCO AS-1000 automatically negotiates with its clients using Diffie-Hellman key exchange algorithm. This ensures confidentiality of communications and eliminates complicated key management processes. Additionally, the built-in RADIUS

client provides user authentication, authorization, and accounting (AAA). Users must also provide a Login Name and Password before gaining network access and traffic is let through. This means peace of mind for the user and maximum control for the network operator.

Future-ready Wireless Networks, Today

ORiNOCO AS-1000 uses the international IEEE 802.11b standard to ensure interoperability with certified PC cards which provide up to 11Mb/s data rates over the air in the worldwide 2.4GHz unlicensed frequencies. It also comes with a convenient, user-friendly configuration and management tool — AS Manager.

Basic ORiNOCO AS-1000 Configuration



ORiNOCO AS-1000

Specifications

Features

Per-user per-session keys using Diffie-Hellman key exchange algorithm
RADIUS user authentication
Support of PAP, CHAP
Support of IEEE 802.11(b) radio PC cards

Physical Interfaces/Ports

802.3 Ethernet

– One 10base-T (RJ45 socket)
– One 10base-2 (BNC connector)

802.11 Wireless LAN

One PC card slot for radio card

Management

AS Manager management and configuration tool
SNMP MIB I-II, TFTP

LEDs

– Power
– Ethernet LAN activity
– PC card activity on slot A
– Flash card active in slot B

Dimensions

50 x 185 x 261 mm (2.0" x 7.3" x 10.2")

Weight

1.75 kg (3.86 lb)

Operating temperature

0° to +40° C (20% to 80% non-condensing humidity)

Power Supply

Integrated module
Autosensing 100/240 VAC, 50/60 Hz, 0.2 A
AU, UK, US/JP, EU types

Comcodes

848 433 462 ORiNOCO AS-1000 - US/CAN power cord*
848 433 470 ORiNOCO AS-1000 - Europe power cord*
848 433 512 ORiNOCO AS-1000 - UK power cord*
848 440 954 ORiNOCO AS-1000 - Australia power cord*

Acronyms

AS — Access Server
CHAP — Challenge Handshake Authorization Protocol
IEEE — Institute of Electrical and Electronics Engineers
LAN — Local Area Network
LED — Light Emitting Diode
MIB — Management Information Base
PAP — Password Authentication Protocol
PC — Personal Computer
PPP — Point-to-Point Protocol
RADIUS — Remote Authentication Dial-in User Service
SNMP — Simple Network Management Protocol
TFTP — Trivial File Transfer Protocol
VAC — Volts Alternating Current

For additional information, please contact your Lucent Technologies Sales Representative. You can also visit our web site at <http://www.lucent.com/orinoco> or call 1-800-928-3526.

ORiNOCO and WaveLAN are trademarks or registered trademarks of Lucent Technologies Inc.

Windows is a registered trademark of Microsoft Corp. in the United States and/or other countries.

This document is for planning purposes only and is not intended to modify or supplement any specifications or warranties relating to Lucent Technologies products and services.

Copyright © 2000 Lucent Technologies Inc.
All rights reserved
Printed in U.S.A.

Lucent Technologies Inc.
Marketing Communications
6710 PJE Issue 2 5/00

Lucent Technologies
Bell Labs Innovations



* Note: Requires one ORiNOCO PC Card for operation